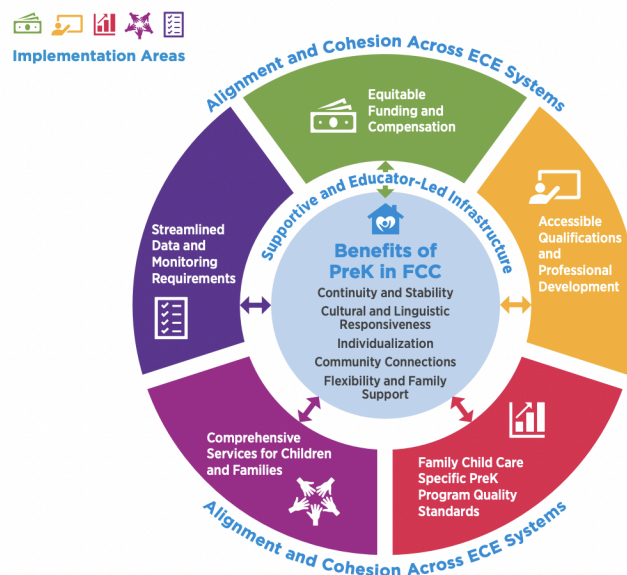


Enriching Public Pre-K Through Inclusion of Family Child Care (EPIC FCC) Cohort Application for State and Local Government

[Home Grown](#) is now accepting applications for the inaugural cohort of the Enriching Public Pre-K Through Inclusion of Family Child Care (EPIC FCC) initiative, facilitated by the [National Institute of Early Education Research](#). The EPIC FCC initiative seeks to support state, city, county and tribal government leaders in expanding the participation of family child care (FCC) educators in their pre-K systems or engaging FCC educators in these pre-K systems for the first time. Home Grown is committed to ensuring that home-based child care providers can fully participate in well-resourced early childhood initiatives, including pre-K. To do this, we recognize that systems need to look and behave differently to appropriately include home-based child care providers and the families they serve.

For the past two years, Home Grown has invested in research and policy analysis to support the inclusion of family child care programs in state- and city-funded pre-K initiatives with teams at both the [National Institute of Early Education Research](#) and the [Pre-K In FCC Team](#) including Erikson Institute, University of Delaware and Equity Action Research Coalition at the UNC Frank Porter Graham Child Development Institute. We intend to use materials emerging from this work to support state and city leaders to expand the participation of FCC educators in their pre-K programs.

Conceptual Framework for Including FCC in Mixed-Delivery PreK Systems



Birth-to-five ECE systems context: Historically not designed for FCC programs
Sociocultural context: Legacy of structural racism, classism, and sexism

Overview of Enriching Public Pre-K through Inclusion of Family Child Care (EPIC FCC) Cohort Application for State and Local Government

Benefits: Government partners participating in the Home Grown initiative are eligible for:

- Flexible planning grants of \$25,000 to support implementation planning.
- Support of an expert Planning Navigator with experience in administration of early childhood systems from the National Institute on Early Education Research.
- Learning Community with fellow states and local government agencies on topics including:
 - Program design and pre-K program standards
 - Pre-K supports
 - Equitable financing
 - State/local public sector oversight and governance
- Access to guidance documents and resources, including implementation plans, compendium of programs and toolkit, and more.
- Upon successful completion of the planning period, there may be an opportunity to apply for additional implementation funds.

Timeline

- **July 11, 2024-August 21, 2024:** [Application](#) period
- **Wednesday, July 31, noon-1 p.m. EST** Information session to help government agencies and partners assess whether this initiative is a fit for them and if they wish to apply and participate. Please [register](#) to attend.
- **Wednesday, August 21, 2024 at 4 p.m. EST** All [applications](#) (with [attestation](#) where relevant) must be submitted.
- **September 4, 2024:** Application notices distributed. MOUs distributed to selected applicants.
- **September 30, 2024:** Signed MOUs due; payment of planning grant initiated upon signature.
- **September 18, 1:00-3:00 p.m. EST:** First Community of Practice
- **September 2024 -February 2025:** Action planning and support from Planning Navigators; Learning Community meetings

Interested to learn more?

Register for the information session: Wednesday, July 31, noon-1 p.m. EST Please [register](#) to attend.

Or

Email: info@homegrownchildcare.org with any questions.